

**Our city is filled with our hopes and dreams. Long-term planning has enabled us to make them a reality, shape a home that reflects our shared visions, and prepare for the future. How can we continue to build a Space for Our Dreams?**

# Space For Our Dreams

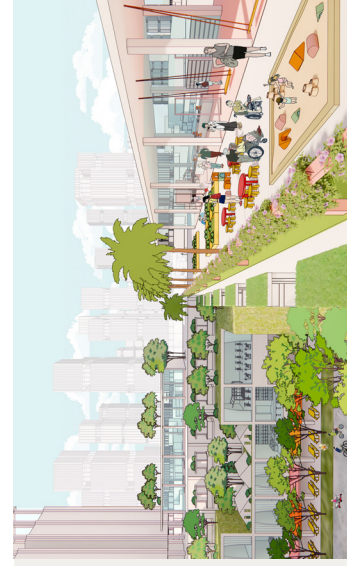
To make Singapore a great city to live, work and play



# Paya Lebar Air Base

THE NEXT FLIGHT

From the 2030s, Paya Lebar Air Base (PLAB) will be relocated to make way for a new generation town in the east of Singapore. URA invited the Singapore Institute of Architects (SIA) and Singapore Institute of Planners (SIP) to come up with initial concept ideas for the redevelopment of PLAB as a Community of the Future. Useful ideas will be studied in greater detail to see if they can be incorporated into the future Master Plan for PLAB.



1

## Innovative and Active Community; Diverse and Creative Jobs and Spaces

Building upon our existing polycentric model, PLAB will become a distinctive job node to bring employment closer to homes. In particular, PLAB could be planned to:

**Provide direct links, connect and improve travel times between surrounding communities and neighbouring towns through PLAB.**

**Ensure ease and efficient movement via a people-centric mobility network and use of shared spaces that contribute to well-being and high quality of life.**

**Enable smart, flexible and diverse workspaces by integrating live-work areas creatively that offer greater flexibility and variety.**



2

## Neighbourly and Distinctive Community; Liveable and Inclusive Environment

PLAB will help Singapore meet its future housing demand, create districts with differentiated characters and distinct identities, and can contribute to a stronger sense of ownership and belonging among its inhabitants too. We will:

**Develop distinctive districts anchored on PLAB's heritage and unique site features.**

**Create self-contained and community-centric neighbourhoods that fosters and strengthens social bonds and resilience.**

**Plan for flexible spaces that can be adapted to changing needs over time.**



3

## Sustainable and Playful Community; Green and Blue Heart of the East

PLAB will be developed to address the growing challenges of climate change and resource scarcity. We will explore:

**Stitching the town and surrounding areas together with a green and blue network to support biodiversity, recreation and climate resilience.**

**Employ circular economy and closed loop systems, and power the town sustainably with half or more of its energy needs coming from renewable sources.**



# Live

WELL AND TOGETHER

Housing is at the heart of Singapore's high-quality living environment. Besides meeting our basic need for shelter, it contributes to a strong sense of ownership and belonging among Singaporeans. As our population ages and households become increasingly diverse, we will continue to transform our living environment to accommodate these shifts.

# Steward

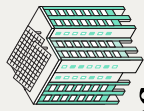
THE GREEN AND BLUE

Nature plays a key role in a liveable and resilient city, especially against the impact of urbanisation and climate change. Green and blue spaces support natural ecosystems and also benefit our health and well-being. We will continue to work with communities to transform Singapore into a City in Nature.



1

## More Homes for New Needs and Aspirations



Providing inclusive and accessible homes for all continues to be central to Singapore's housing goals. We will:

**Develop new towns that are sensitively integrated with our nature and heritage assets.**

**Plan for more homes in and around the city and close to key amenities.**

**Diversify housing types to cater to a wider variety of households.**



2

## Inclusive and Close-Knit Towns



Our towns will help build a sense of belonging among residents and foster vibrant communities. We will:

**Work towards a better mix of private and public housing to allow more interactions among residents from all walks of life.**

**Plan for towns that support residents' health and well-being across different life stages.**

**Develop more walkable streets and community spaces to encourage social interactions and bonding.**



3

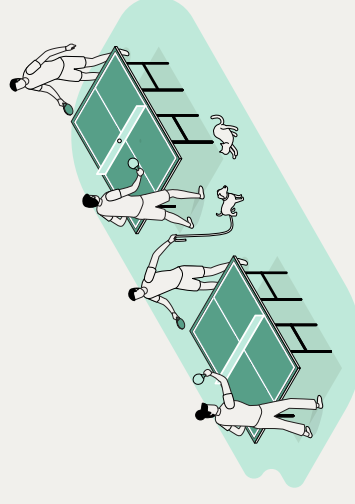
## Future-Ready Towns



As the lifestyles of residents evolve, towns — both existing and upcoming ones — must adapt too. We will:

**Provide more adaptable and flexible spaces to meet new or unexpected needs.**

**Rejuvenate ageing towns to ensure they continue to serve both present and future generations of residents.**



1

## Stewardship of Natural Capital



Our green and blue spaces will be better integrated within our urban fabric, guided by a science-based approach.

**We have developed ecological profiling tools and carried out an Ecological Profiling Exercise (EPE) to integrate nature into our long-term plans.**

**We will extend our natural capital with Nature Park Networks and Nature Corridors to ensure long-term ecological resilience.**



2

## Multi-Functional Green and Blue Spaces



By integrating our green and blue spaces with our urban environment, we can enhance ecological connectivity, improve liveability, and meet social and recreational needs. We will:

**Create spaces that support our natural habitats and serve as leisure spaces.**

**Restore nature into our urban landscape to improve liveability, mitigate urban heat and provide alternative habitats for biodiversity.**

**Balance development needs with nature conservation by studying how we can develop more sensitively.**



3

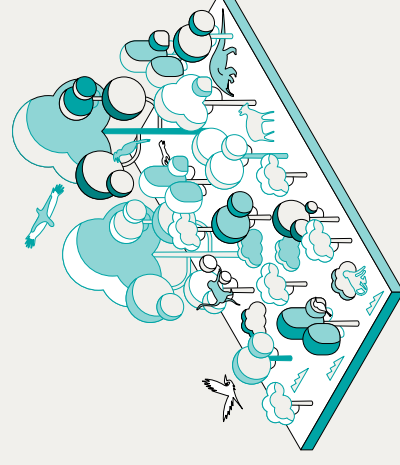
## Climate Resilience Through Nature



Green and blue spaces can mitigate the impact of climate change while providing recreational and ecological benefits. We will:

**Intensify greenery in built-up areas to reduce surface and ambient temperatures.**

**Combine engineering solutions with natural elements where appropriate, to improve our climate resilience while enhancing biodiversity.**



# Cherish

DISTINCTIVE AND LOVEABLE

As our city matures, it should continue to be one that present and future generations are proud to call home. Familiar places, distinctive buildings and our built heritage anchor our sense of belonging and make the city unique. We will work together to keep Singapore inclusive and engaging so that it remains a great place to chase our dreams and grow old in.

1

## A Loveable City for All

Our heritage and identity will be kept alive for current and future generations to cherish even as the city develops. We will:

Retain familiar places as we develop, through identifying, protecting and sustaining our heritage assets, as well as exploring ways to enhance the character and identity of places.

Blend the new and old, through sensitive integration and adaptive reuse of our built heritage to make Singapore an endearing city for all.

Celebrate and sustain both the tangible and intangible aspects of heritage and foster the sharing of memories and stories that give our spaces meaning.

2

## Distinctive and Endearing Spaces

Our favourite places in the city are often the result of considered and concerted efforts in urban design and architecture. We will:

Create memorable places and distinctive buildings through sensitive urban design and innovative architecture to build a sense of belonging.

Open up more spaces for people to gather, interact, or just relax and enjoy the city.

3

## Places for the Community

Fostering a sense of belonging is important to establish the identity of a place and enhance its value. We will:

Co-create places from the ground up with local communities to instil a greater sense of ownership and create more lively places.

Engage the public so that more people can participate in telling the stories of our built heritage.

# Work

ANYWHERE AND EVERYWHERE

As the global economy changes in new and unexpected ways, Singapore must adapt and offer attractive economic spaces for businesses to ensure quality jobs for our people. Traditional workspaces and jobs are evolving with changing needs such as new business models and more flexible working arrangements. Working will no longer be confined to just the office and in future, not even the factory.

1

## Attractive Job Nodes

Our economy will sustain and support a diversity of jobs and workplaces for all. We will:

Continue to enhance the attractiveness of our city centre as a global business hub while we transform it into a more mixed-use and vibrant precinct, by introducing a wider range of amenities, recreational and lifestyle offerings, as well as more residential options.

Introduce more job nodes outside the city centre to create vibrant workspaces nearer to homes.

Develop bustling economic ecosystems by bringing together businesses, research and other related activities and infrastructure to create greater synergies.

2

## Flexible Spaces for Innovation and New Needs

Our workspaces must remain adaptable for Singapore to maintain its competitive edge. We will:

Explore suitable locations for Business-White zones to provide industries with greater flexibility to test new concepts with new use mixes, at the same location.

Create Enterprise Districts that offer flexibility in planning for different uses across a wider district, beyond individual buildings.

Offer shorter lease tenures for some sites in selected areas to pilot new uses, support the fast-changing needs of the economy and facilitate rejuvenation.

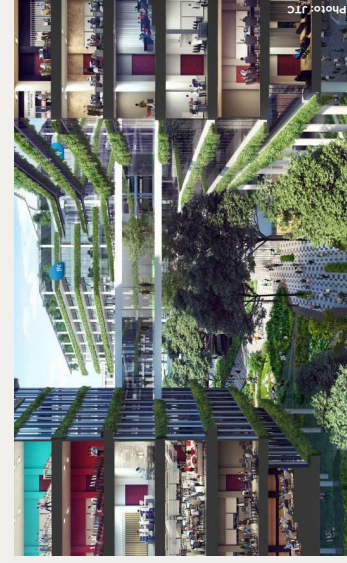
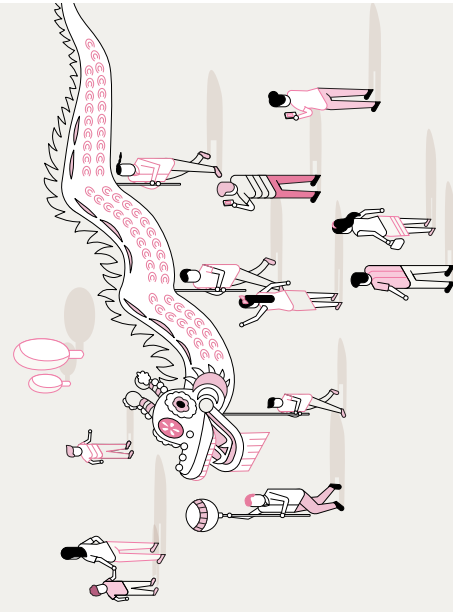
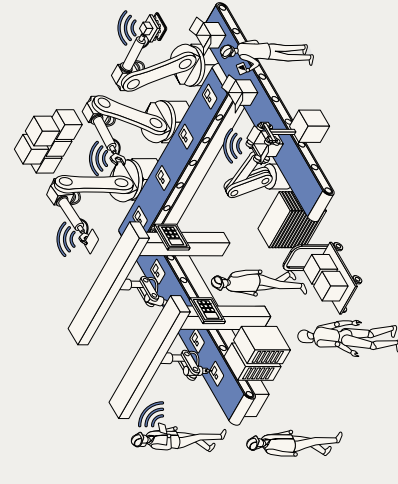
3

## A Future-Ready Economy

As business models, technological trends and the aspirations of our workforce evolve, so must our workspaces. We will:

Provide diverse jobs and workspaces by adapting to higher-value industries and new trends.

Optimise land for workspaces to give ourselves more room for emerging sectors.



# Play

HEALTHY AND HAPPY

Play spaces are where we build community, strengthen relationships and find moments of delight in our daily life in the city. Leisure and recreational spaces liven up our urban environment, keep us active and improve our lives. By diversifying our play offerings and making them accessible to more people, we ensure Singapore continues to be an attractive and liveable city for us and visitors from around the world.

1

## More Recreation Closer to Homes

A well-connected network of recreational facilities in our towns ensures we all can relax and unwind daily. We will:

**Support the integration of a variety of recreational facilities at one place to increase options and optimise land use.**

**Co-create play spaces with residents.**

**Introduce different types of green spaces to bring respite to urban living and foster community bonding.**

2

## An Island of Green, Blue and Fun

Our rich variety of green and blue spaces can be enjoyed and appreciated by more people. We will:

**Expand our Nature-Based Recreation Network and activate our reservoirs and waterways to offer more leisure and recreational options.**

**Embrace our islandness and explore opportunities for more recreational activities at our coasts and offshore islands.**

3

## A Playful City for All

Tourism strengthens Singapore's position as a vibrant city globally, enriches local experiences and reinforces our national story. We will:

**Welcome fresh and exciting attractions to ensure Singapore remains a destination of choice for many.**

**Facilitate the transformation of existing attractions and spaces to provide novel leisure and lifestyle experiences.**

**Provide opportunities for people to create moments of fun and delight in public spaces all around the city.**

# Move

EFFICIENT AND CONNECTED

The way people and goods move in cities and how we connect with the world will transform with new mobility technologies and innovations. Our continued focus is on making movement within our city convenient, strengthening our mobility networks and shifting towards more sustainable and efficient modes of travel to foster faster and easier connections within our city and with the world.

1

## A Comprehensive Mobility Network

Getting around Singapore will become more convenient and sustainable. We will:

**Prioritise public transport and active mobility options.**

**Transform roads to make walking, cycling and commuting on public transport more attractive.**

**Leverage new technologies that could improve the way we move.**

2

## Better and More Efficient Delivery

Our towns must be designed to support the increasing volume of goods deliveries from e-commerce. We will:

**Support logistics operations so that more deliveries can be fulfilled with fewer resources.**

**Improve the efficiency of last-mile deliveries through and infrastructure planning and adoption of technologies.**

3

## A Well-Connected Global Hub

As a small country with an open economy, connectivity to the rest of the world has been core to Singapore's competitiveness. We will:

**Enhance our air, maritime and logistics connections with new infrastructure and better integration with industries.**

**Advance our position as a global digital hub through strong digital connections with the world.**

